

**SUPRO**<sup>®</sup>  
**»» BOX**

# R S E R I E S

[suprobox.com](http://suprobox.com)

TRANSPORTATION AND STORAGE CASES



Suprobox cases have been made to withstand the toughest environmental and climatic conditions.

The case is manufactured as a solid uniform structure which makes it extra resistant to impact and vibration enabling the case to be handled and transported in extreme situations.

The polymer raw material resin is UV resistant and is specifically designed to function in extreme temperatures and under solar load.

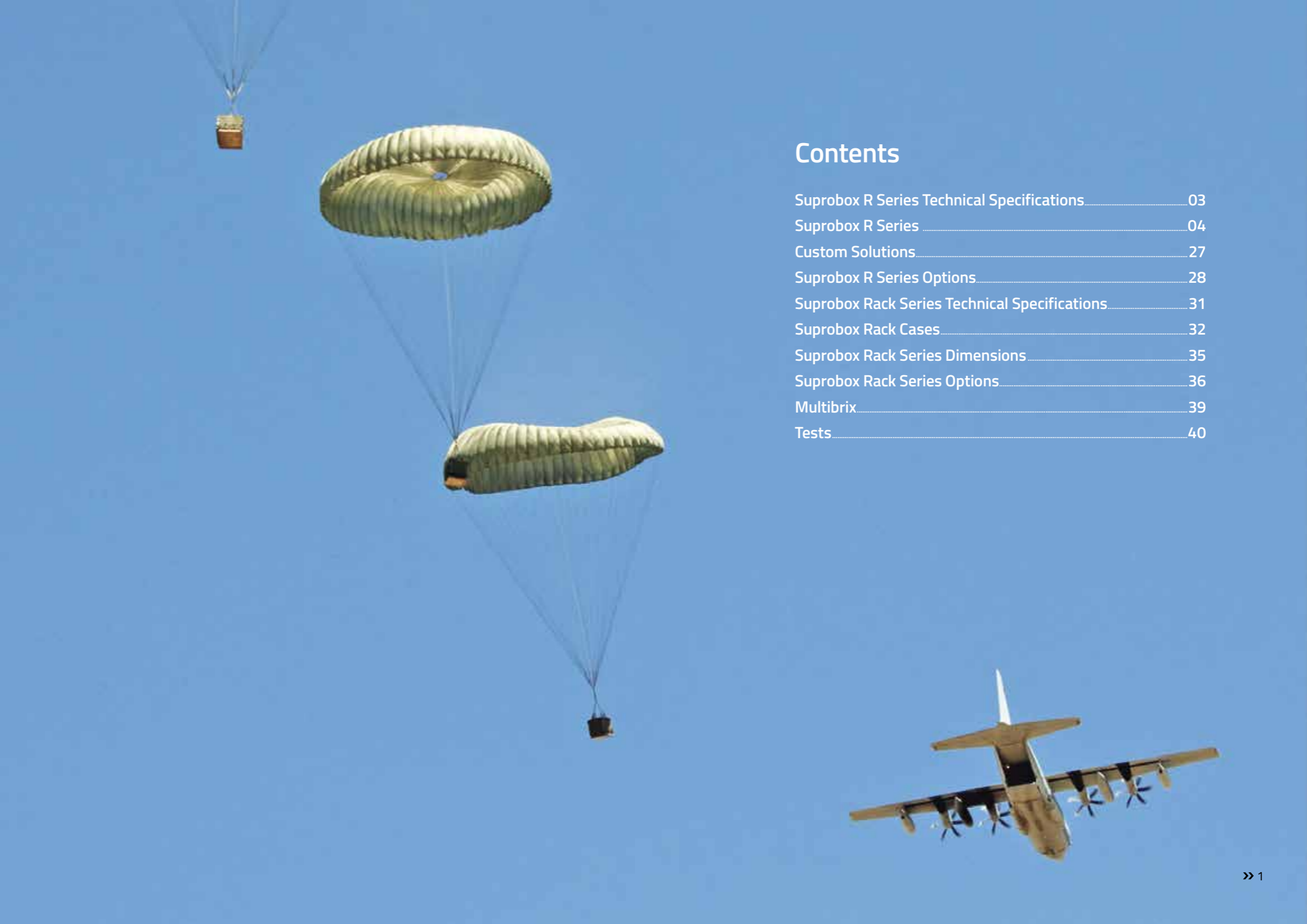
Ideal for electronics, memory storage equipment, servers, lab and testing equipment, medical equipment, aerospace equipment, broadcasting equipment, meteorological equipment, flight simulators, satellite communications, radars and mobile military equipment.

R SERIES 465 different sizes

RACK CASES 24 different sizes

With over 480 sizes SUPROBOX offer one of the widest selections available in the market. Once placed in a Suprobox case, your delicate equipment and instruments are transported and used under complete protection from shock, vibration, moisture and impact. Your cases come furnished with the appropriate grade foam and/or shock mounting equipment in line with your special project requirements.

- Ruggedized case body made from impact resistant PE material
- Heavy-duty polymer handles with soft rubber grip
- Stainless Steel, heavy duty catches
- Membrane valve (standard)
- Waterproof silicone seal between body and lid
- Extra resistant to impact & vibration
- UV resistant
- Made to withstand extreme temperatures & solar load
- Optional rugged edge castors
- Custom internals available
- Color options
- Multibrix® stacking system (straight or cross stacking of same or different size cases)
- MIL-STD 810 G, Def Stan 81-41, STANAG 4280
- Dust and Water Protection rated IP 65/IP 67



## Contents

- Suprobox R Series Technical Specifications..... 03
- Suprobox R Series ..... 04
- Custom Solutions..... 27
- Suprobox R Series Options..... 28
- Suprobox Rack Series Technical Specifications..... 31
- Suprobox Rack Cases..... 32
- Suprobox Rack Series Dimensions..... 35
- Suprobox Rack Series Options..... 36
- Multibrix..... 39
- Tests..... 40



## SUPROBOX R SERIES

### TECHNICAL SPECIFICATIONS

Heavy-duty polymer handles with soft rubber grip.



Breather valve (Optional) maintains pressure balance



76mm rigid edge casters enable the case to be mobilized by lifting the handle. Built in edge casters are compatible with the stacking feature.



Manufactured as a solid uniform structure which makes it extra resistant to impact & vibration.



Multibrix stacking system.



Stainless Steel, heavy duty catches are larger than standard products available on the market.



Waterproof silicone seal between base and lid.

UV resistant made to withstand extreme temperatures & solar load.



PRODUCT	EXTERNAL DIMENSIONS (mm)					INTERNAL DIMENSIONS (mm)					Handle No.	Weight-Appr. (kg)	Special Features
	Length	Width	Height	Base Height	Lid Height	Length	Width	Height	Base Height	Lid Height			
3030-3010	300	300	405	300	105	210	210	355	280	75	2	4,1	-----
4040-3010	400	400	405	300	105	310	310	355	280	75	2	6,2	-----
5050-3010	500	500	405	300	105	410	410	355	280	75	2	8,1	-----
6050-2010	600	500	300	200	100	510	410	250	180	70	2	8,4	-----
6050-3010	600	500	400	300	100	510	410	350	280	70	2	9,3	-----
6050-2023	600	500	430	200	230	510	410	380	180	200	4	10,5	-----
6050-4010	600	500	500	400	100	510	410	450	380	70	2	10,7	-----
6050-3023	600	500	530	300	230	510	410	480	280	200	4	11,5	-----
6050-5010	600	500	600	500	100	510	410	550	480	70	2	12,0	-----
6050-2043	600	500	630	200	430	510	410	580	180	400	4	12,9	-----
6050-4023	600	500	630	400	230	510	410	580	380	200	4	12,8	-----
6050-3043	600	500	730	300	430	510	410	680	280	400	4	13,9	-----
6050-5023	600	500	730	500	230	510	410	680	480	200	4	14,1	-----
6050-4043	600	500	830	400	430	510	410	780	380	400	4	15,2	-----
6050-5043	600	500	930	500	430	510	410	880	480	400	4	16,5	-----
8040-3010	800	400	405	300	105	710	310	355	280	75	2	10,0	-----
8040-3010T	800	400	405	300	105	710	310	355	280	75	2	10,6	Wheels
8050-3010	800	500	405	300	105	710	410	355	280	75	2	11,6	-----
8050-3010T	800	500	405	300	105	710	410	355	280	75	2	12,2	Wheels
8060-2012	800	600	325	200	120	710	510	255	180	75	4	13,6	-----
8060-2012T	800	600	325	200	120	710	510	255	180	75	4	14,2	Wheels
8060-1125	800	600	360	110	230	710	510	290	90	200	4	14,7	-----
8060-3012	800	600	425	300	120	710	510	355	280	75	4	14,8	-----
8060-3012T	800	600	425	300	120	710	510	355	280	75	4	15,4	Wheels
8060-2025	800	600	450	200	250	710	510	380	180	200	8	17,0	-----
8060-2025T	800	600	450	200	250	710	510	380	180	200	8	17,6	Wheels
8060-4012	800	600	525	400	120	710	510	455	380	75	4	16,6	-----
8060-4012T	800	600	525	400	120	710	510	455	380	75	4	17,2	Wheels



**3030-3010**



**6050-5010**

PRODUCT	EXTERNAL DIMENSIONS (mm)					INTERNAL DIMENSIONS (mm)					Handle No.	Weight-Appr. (kg)	Special Features
	Length	Width	Height	Base Height	Lid Height	Length	Width	Height	Base Height	Lid Height			
8060-3025	800	600	550	300	250	710	510	480	280	200	8	18,2	-----
8060-3025T	800	600	550	300	250	710	510	480	280	200	8	18,8	Wheels
8060-1145	800	600	560	110	450	710	510	490	90	400	4	17,8	-----
8060-5012	800	600	625	500	120	710	510	555	480	75	4	17,6	-----
8060-5012T	800	600	625	500	120	710	510	555	480	75	4	18,2	Wheels
8060-2045	800	600	650	200	450	710	510	580	180	400	8	20,1	-----
8060-2045T	800	600	650	200	450	710	510	580	180	400	8	20,7	Wheels
8060-4025	800	600	650	400	250	710	510	580	380	200	8	20,0	-----
8060-4025T	800	600	650	400	250	710	510	580	380	200	8	20,6	Wheels
8060-3045	800	600	750	300	450	710	510	680	280	400	8	21,3	-----
8060-3045T	800	600	750	300	450	710	510	680	280	400	8	21,9	Wheels
8060-5025	800	600	750	500	250	710	510	680	480	200	8	21,0	-----
8060-5025T	800	600	750	500	250	710	510	680	480	200	8	21,6	Wheels
8060-4045	800	600	850	400	450	710	510	780	380	400	8	23,1	-----
8060-4045T	800	600	850	400	450	710	510	780	380	400	8	23,7	Wheels
8060-5045	800	600	950	500	450	710	510	880	480	400	8	24,1	-----
8060-5045T	800	600	950	500	450	710	510	880	480	400	8	24,7	Wheels
8070-2012	800	700	325	200	120	710	610	255	180	75	4	15,1	-----
8070-2012T	800	700	325	200	120	710	610	255	180	75	4	15,7	Wheels
8070-3012	800	700	425	300	120	710	610	355	280	75	4	16,7	-----
8070-3012T	800	700	425	300	120	710	610	355	280	75	4	17,3	Wheels
8070-2024	800	700	440	200	240	710	610	370	180	190	8	18,5	-----
8070-2024T	800	700	440	200	240	710	610	370	180	190	8	19,1	Wheels
8070-4012	800	700	525	400	120	710	610	455	380	75	4	18,2	-----
8070-4012T	800	700	525	400	120	710	610	455	380	75	4	18,8	Wheels
8070-2034	800	700	540	200	340	710	610	470	180	290	8	20,1	-----
8070-2034T	800	700	540	200	340	710	610	470	180	290	8	20,7	Wheels
8070-3024	800	700	540	300	240	710	610	470	280	190	8	20,1	-----



**8060-3025**



**8070-3012T**



PRODUCT	EXTERNAL DIMENSIONS (mm)					INTERNAL DIMENSIONS (mm)					Handle No.	Weight Appr. (kg)	Special Features
	Length	Width	Height	Base Height	Lid Height	Length	Width	Height	Base Height	Lid Height			
8070-3024T	800	700	540	300	240	710	610	470	280	190	8	20,7	Wheels
8070-2044	800	700	640	200	440	710	610	570	180	390	8	21,7	-----
8070-2044T	800	700	640	200	440	710	610	570	180	390	8	22,3	Wheels
8070-3034	800	700	640	300	340	710	610	570	280	290	8	21,7	-----
8070-3034T	800	700	640	300	340	710	610	570	280	290	8	22,3	Wheels
8070-4024	800	700	640	400	240	710	610	570	380	190	8	21,6	-----
8070-4024T	800	700	640	400	240	710	610	570	380	190	8	21,6	Wheels
8070-6012	800	700	725	600	120	710	610	655	580	75	4	24,1	-----
8070-6012T	800	700	725	600	120	710	610	655	580	75	4	24,7	Wheels
8070-3044	800	700	740	300	440	710	610	670	280	390	8	23,3	-----
8070-3044T	800	700	740	300	440	710	610	670	280	390	8	23,9	Wheels
8070-4034	800	700	740	400	340	710	610	670	380	290	8	23,2	-----
8070-4034T	800	700	740	400	340	710	610	670	380	290	8	23,8	Wheels
8070-2064	800	700	840	200	640	710	610	770	180	590	8	25,0	-----
8070-2064T	800	700	840	200	640	710	610	770	180	590	8	25,6	Wheels
8070-4044	800	700	840	400	440	710	610	770	380	390	8	24,8	-----
8070-4044T	800	700	840	400	440	710	610	770	380	390	8	25,1	Wheels
8070-6024	800	700	840	600	240	710	610	770	580	190	8	27,5	-----
8070-6024T	800	700	840	600	240	710	610	770	580	190	8	28,1	Wheels
8070-3064	800	700	940	300	640	710	610	870	280	590	8	26,6	-----
8070-3064T	800	700	940	300	640	710	610	870	280	590	8	27,2	Wheels
8070-6034	800	700	940	600	340	710	610	870	580	290	8	29,1	-----
8070-6034T	800	700	940	600	340	710	610	870	580	290	8	29,7	Wheels
8070-4064	800	700	1040	400	640	710	610	970	380	590	8	28,1	-----
8070-4064T	800	700	1040	400	640	710	610	970	380	590	8	28,7	Wheels
8070-6044	800	700	1040	600	440	710	610	970	580	390	8	30,7	-----
8070-6044T	800	700	1040	600	440	710	610	970	580	390	8	31,3	Wheels
8070-6064	800	700	1240	600	640	710	610	1170	580	590	8	34,0	-----



**8070-2044T**



**8070-4024T**



PRODUCT	EXTERNAL DIMENSIONS (mm)					INTERNAL DIMENSIONS (mm)					Handle No.	Weight Appr. (kg)	Special Features
	Length	Width	Height	Base Height	Lid Height	Length	Width	Height	Base Height	Lid Height			
8070-6064T	800	700	1240	600	640	710	610	1170	580	590	8	34,6	Wheels
9040-3010	900	400	405	300	105	810	310	355	280	75	2	11,0	-----
9040-3010T	900	400	405	300	105	810	310	355	280	75	2	11,6	Wheels
9050-1410	900	500	245	140	105	810	410	195	120	75	2	10,8	-----
9050-1410T	900	500	245	140	105	810	410	195	120	75	2	11,4	Wheels
9050-3010	900	500	405	300	105	810	410	355	280	75	2	12,6	-----
9050-3010T	900	500	405	300	105	810	410	355	280	75	2	13,2	Wheels
9050-3010TTEP	900	500	405	300	105	810	410	355	280	75	2	15,5	Wheels+Trayx2
9050-4010	900	500	505	400	105	810	410	455	380	75	2	14,4	-----
9050-4010T	900	500	505	400	105	810	410	455	380	75	2	15,0	-----
9050-4010TTEP	900	500	505	400	105	810	410	455	380	75	2	17,3	Wheels+Trayx2
9050-1432	900	500	465	140	320	810	410	415	120	295	4	14,4	-----
9050-1432T	900	500	465	140	320	810	410	415	120	295	4	15,0	Wheels
9050-3032	900	500	625	300	320	810	410	575	280	295	4	16,1	-----
9050-3032T	900	500	625	300	320	810	410	575	280	295	4	16,7	Wheels
9050-4032	900	500	725	400	320	810	410	675	380	295	4	17,9	-----
9050-4032T	900	500	725	400	320	810	410	675	380	295	4	18,5	Wheels
9060-2012	900	600	325	200	120	810	510	255	180	75	4	14,2	-----
9060-2012T	900	600	325	200	120	810	510	255	180	75	4	14,8	Wheels
9060-3012	900	600	425	300	120	810	510	355	280	75	4	15,5	-----
9060-3012T	900	600	425	300	120	810	510	355	280	75	4	16,1	Wheels
9060-2025	900	600	450	200	250	810	510	380	180	200	8	17,9	-----
9060-2025T	900	600	450	200	250	810	510	380	180	200	8	18,5	Wheels
9060-4012	900	600	525	400	120	810	510	455	380	75	4	17,2	-----
9060-4012T	900	600	525	400	120	810	510	455	380	75	4	17,2	Wheels
9060-3025	900	600	550	300	250	810	510	480	280	200	8	19,2	-----
9060-3025T	900	600	550	300	250	810	510	480	280	200	8	19,8	Wheels
9060-5012	900	600	625	500	120	810	510	555	480	75	4	18,5	-----



**9050-1410T**



**9050-4010TTEP**

PRODUCT	EXTERNAL DIMENSIONS (mm)					INTERNAL DIMENSIONS (mm)					Handle No.	Weight Appr. (kg)	Special Features
	Length	Width	Height	Base Height	Lid Height	Length	Width	Height	Base Height	Lid Height			
9060-5012T	900	600	625	500	120	810	510	555	480	75	4	19,1	Wheels
9060-2045	900	600	650	200	450	810	510	580	180	400	8	21,2	-----
9060-2045T	900	600	650	200	450	810	510	580	180	400	8	21,8	Wheels
9060-4025	900	600	650	400	250	810	510	580	380	200	8	20,9	-----
9060-4025T	900	600	650	400	250	810	510	580	380	200	8	21,5	Wheels
9060-3045	900	600	750	300	450	810	510	680	280	400	8	22,5	-----
9060-3045T	900	600	750	300	450	810	510	680	280	400	8	23,1	Wheels
9060-5025	900	600	750	500	250	810	510	680	480	200	8	22,2	-----
9060-5025T	900	600	750	500	250	810	510	680	480	200	8	22,8	Wheels
9060-4045	900	600	850	400	450	810	510	780	380	400	8	24,2	-----
9060-4045T	900	600	850	400	450	810	510	780	380	400	8	24,8	Wheels
9060-5045	900	600	950	500	450	810	510	880	480	400	8	25,5	-----
9060-5045T	900	600	950	500	450	810	510	880	480	400	8	26,1	Wheels
9070-2012	900	700	325	200	120	810	610	255	180	75	4	16,6	-----
9070-2012T	900	700	325	200	120	810	610	255	180	75	4	17,2	Wheels
9070-3012	900	700	425	300	120	810	610	355	280	75	4	18,3	-----
9070-3012T	900	700	425	300	120	810	610	355	280	75	4	18,9	Wheels
9070-2024	900	700	440	200	240	810	610	370	180	190	8	20,3	-----
9070-2024T	900	700	440	200	240	810	610	370	180	190	8	20,9	Wheels
9070-4012	900	700	525	400	120	810	610	455	380	75	4	20,0	-----
9070-4012T	900	700	525	400	120	810	610	455	380	75	4	20,6	Wheels
9070-2034	900	700	540	200	340	810	610	470	180	290	8	22,0	-----
9070-2034T	900	700	540	200	340	810	610	470	180	290	8	22,6	Wheels
9070-3024	900	700	540	300	240	810	610	470	280	190	8	22,0	-----
9070-3024T	900	700	540	300	240	810	610	470	280	190	8	22,6	Wheels
9070-2044	900	700	640	200	440	810	610	570	180	390	8	23,7	-----
9070-2044T	900	700	640	200	440	810	610	570	180	390	8	24,3	Wheels
9070-3034	900	700	640	300	340	810	610	570	280	290	8	23,7	-----



**9060-4025T**



**9060-5045**



PRODUCT	EXTERNAL DIMENSIONS (mm)					INTERNAL DIMENSIONS (mm)					Handle No.	Weight Appr. (kg)	Special Features
	Length	Width	Height	Base Height	Lid Height	Length	Width	Height	Base Height	Lid Height			
9070-3034T	900	700	640	300	340	810	610	570	280	290	8	24,3	Wheels
9070-4024	900	700	640	400	240	810	610	570	380	190	8	23,7	-----
9070-4024T	900	700	640	400	240	810	610	570	380	190	8	24,3	Wheels
9070-6012	900	700	725	600	120	810	610	655	580	75	4	26,4	-----
9070-6012T	900	700	725	600	120	810	610	655	580	75	4	27,0	Wheels
9070-3044	900	700	740	300	440	810	610	670	280	390	8	25,4	-----
9070-3044T	900	700	740	300	440	810	610	670	280	390	8	26,0	Wheels
9070-4034	900	700	740	400	340	810	610	670	380	290	8	25,4	-----
9070-4034T	900	700	740	400	340	810	610	670	380	290	8	26,0	Wheels
9070-2064	900	700	840	200	640	810	610	770	180	590	8	27,2	-----
9070-2064T	900	700	840	200	640	810	610	770	180	590	8	27,8	Wheels
9070-4044	900	700	840	400	440	810	610	770	380	390	8	27,1	-----
9070-4044T	900	700	840	400	440	810	610	770	380	390	8	27,7	Wheels
9070-6024	900	700	840	600	240	810	610	770	580	190	4	30,1	-----
9070-6024T	900	700	840	600	240	810	610	770	580	190	4	30,7	Wheels
9070-3064	900	700	940	300	640	810	610	870	280	590	8	28,9	-----
9070-3064T	900	700	940	300	640	810	610	870	280	590	8	29,5	Wheels
9070-6034	900	700	940	600	340	810	610	870	580	290	8	31,8	-----
9070-6034T	900	700	940	600	340	810	610	870	580	290	8	32,4	Wheels
9070-4064	900	700	1040	400	640	810	610	970	380	590	8	30,6	-----
9070-4064T	900	700	1040	400	640	810	610	970	380	590	8	31,0	Wheels
9070-6044	900	700	1040	600	440	810	610	970	580	390	8	33,5	-----
9070-6044T	900	700	1040	600	440	810	610	970	580	390	8	34,1	Wheels
9070-6064	900	700	1240	600	640	810	610	1170	580	590	8	37,0	-----
9070-6064T	900	700	1240	600	640	810	610	1170	580	590	8	37,6	Wheels
10040-3010	1000	400	405	300	105	910	310	355	280	75	2	12,1	-----
10040-3010T	1000	400	405	300	105	910	310	355	280	75	2	12,7	Wheels
10050-3010	1000	500	405	300	105	910	410	355	280	75	2	13,8	-----



**9070-6012**

**10040-3010T**



PRODUCT	EXTERNAL DIMENSIONS (mm)					INTERNAL DIMENSIONS (mm)					Handle No.	Weight Appr. (kg)	Special Features
	Length	Width	Height	Base Height	Lid Height	Length	Width	Height	Base Height	Lid Height			
10050-3010T	1000	500	405	300	105	910	410	355	280	75	2	14,4	Wheels
10060-2012	1000	600	325	200	120	910	510	255	180	75	4	16,5	-----
10060-2012T	1000	600	325	200	120	910	510	255	180	75	4	17,1	Wheels
10060-3012	1000	600	425	300	120	910	510	355	280	75	4	17,7	-----
10060-3012T	1000	600	425	300	120	910	510	355	280	75	4	18,3	Wheels
10060-2025	1000	600	450	200	250	910	510	380	180	200	8	19,9	-----
10060-2025T	1000	600	450	200	250	910	510	380	180	200	8	20,5	Wheels
10060-3025	1000	600	450	300	250	910	510	480	280	200	8	21,1	-----
10060-3025T	1000	600	450	300	250	910	510	480	280	200	8	21,7	Wheels
10060-4012	1000	600	525	400	120	910	510	455	380	75	4	20,0	-----
10060-4012T	1000	600	525	400	120	910	510	455	380	75	4	20,6	Wheels
10060-2045	1000	600	650	200	450	910	510	580	180	400	8	23,4	-----
10060-2045T	1000	600	650	200	450	910	510	580	180	400	8	24,0	Wheels
10060-4025	1000	600	650	400	250	910	510	580	380	200	8	23,4	-----
10060-4025T	1000	600	650	400	250	910	510	580	380	200	8	24,0	Wheels
10060-5012	1000	600	625	500	120	910	510	555	480	75	4	20,7	-----
10060-5012T	1000	600	625	500	120	910	510	555	480	75	4	21,3	Wheels
10060-3045	1000	600	750	300	450	910	510	680	280	400	8	24,6	-----
10060-3045T	1000	600	750	300	450	910	510	680	280	400	8	25,2	Wheels
10060-5025	1000	600	750	500	250	910	510	680	480	200	8	24,1	-----
10060-5025T	1000	600	750	500	250	910	510	680	480	200	8	24,7	Wheels
10060-4045	1000	600	850	400	450	910	510	780	380	400	8	26,9	-----
10060-4045T	1000	600	850	400	450	910	510	780	380	400	8	27,5	Wheels
10060-5045	1000	600	950	500	450	910	510	880	480	400	8	27,6	-----
10060-5045T	1000	600	950	500	450	910	510	880	480	400	8	28,2	Wheels
10090-3013	1000	900	430	300	130	910	810	350	265	85	4	29,6	-----
10090-3013T	1000	900	430	300	130	910	810	350	265	85	4	30,2	Wheels
10090-4013	1000	900	530	400	130	910	810	450	365	85	4	32,5	-----



**10060-2025T**



**10090-3013**

PRODUCT	EXTERNAL DIMENSIONS (mm)					INTERNAL DIMENSIONS (mm)					Handle No.	Weight Appr. (kg)	Special Features
	Length	Width	Height	Base Height	Lid Height	Length	Width	Height	Base Height	Lid Height			
10090-4013T	1000	900	530	400	130	910	810	450	365	85	4	33,1	Wheels
10090-3034	1000	900	640	300	340	910	810	555	265	290	8	36,5	-----
10090-3034T	1000	900	640	300	340	910	810	555	265	290	8	37,1	Wheels
10090-6013	1000	900	730	600	130	910	810	650	565	85	4	37,1	-----
10090-6013T	1000	900	730	600	130	910	810	650	565	85	4	37,7	Wheels
10090-3044	1000	900	740	300	440	910	810	655	265	390	8	39,0	-----
10090-3044T	1000	900	740	300	440	910	810	655	265	390	8	39,6	Wheels
10090-4034	1000	900	740	400	340	910	810	655	365	290	8	39,4	-----
10090-4034T	1000	900	740	400	340	910	810	655	365	290	8	40,0	Wheels
10090-7013	1000	900	830	700	130	910	810	750	665	85	4	39,5	-----
10090-7013T	1000	900	830	700	130	910	810	750	665	85	4	40,1	Wheels
10090-4044	1000	900	840	400	440	910	810	755	365	390	8	41,9	-----
10090-4044T	1000	900	840	400	440	910	810	755	365	390	8	42,5	Wheels
10090-3064	1000	900	940	300	640	910	810	855	265	590	8	43,9	-----
10090-3064T	1000	900	940	300	640	910	810	855	265	590	8	44,5	Wheels
10090-6034	1000	900	940	600	340	910	810	855	565	290	8	44,0	-----
10090-6034T	1000	900	940	600	340	910	810	855	565	290	8	44,6	Wheels
10090-3074	1000	900	1040	300	740	910	810	955	265	690	8	46,4	-----
10090-3074T	1000	900	1040	300	740	910	810	955	265	690	8	47,0	Wheels
10090-4064	1000	900	1040	400	640	910	810	955	365	590	8	46,8	-----
10090-4064T	1000	900	1040	400	640	910	810	955	365	590	8	47,4	Wheels
10090-6044	1000	900	1040	600	440	910	810	955	565	390	8	46,5	-----
10090-6044T	1000	900	1040	600	440	910	810	955	565	390	8	47,1	Wheels
10090-7034	1000	900	1040	700	340	910	810	955	665	290	8	46,7	-----
10090-7034T	1000	900	1040	700	340	910	810	955	665	290	8	47,0	Wheels
10090-4074	1000	900	1140	400	740	910	810	1055	365	690	8	49,3	-----
10090-4074T	1000	900	1140	400	740	910	810	1055	365	690	8	49,9	Wheels
10090-7044	1000	900	1140	700	440	910	810	1055	665	390	8	48,9	-----



**10090-7013T**



**10090-7044**





PRODUCT	EXTERNAL DIMENSIONS (mm)					INTERNAL DIMENSIONS (mm)					Handle No.	Weight: Appr. (kg)	Special Features
	Length	Width	Height	Base Height	Lid Height	Length	Width	Height	Base Height	Lid Height			
10090-7044T	1000	900	1140	700	440	910	810	1055	665	390	8	49,5	Wheels
10090-6064	1000	900	1240	600	640	910	810	1155	565	590	8	51,4	-----
10090-6064T	1000	900	1240	600	640	910	810	1155	565	590	8	51,7	Wheels
10090-6074	1000	900	1340	600	740	910	810	1255	565	690	8	53,9	-----
10090-6074T	1000	900	1340	600	740	910	810	1255	565	690	8	54,5	Wheels
10090-7064	1000	900	1340	700	640	910	810	1255	665	590	8	53,8	-----
10090-7064T	1000	900	1340	700	640	910	810	1255	665	590	8	54,4	Wheels
10090-7074	1000	900	1440	700	740	910	810	1355	665	690	8	56,3	-----
10090-7074T	1000	900	1440	700	740	910	810	1355	665	690	8	56,9	Wheels
100100-3013	1000	1000	430	300	130	910	910	350	265	85	4	32,1	-----
100100-3013T	1000	1000	430	300	130	910	910	350	265	85	4	32,7	Wheels
100100-4013	1000	1000	530	400	130	910	910	450	365	85	4	34,8	-----
100100-4013T	1000	1000	530	400	130	910	910	450	365	85	4	35,4	Wheels
100100-3034	1000	1000	640	300	340	910	910	555	265	290	8	39,6	-----
100100-3034T	1000	1000	640	300	340	910	910	555	265	290	8	40,2	Wheels
100100-6013	1000	1000	730	600	130	910	910	650	565	85	4	39,9	-----
100100-6013T	1000	1000	730	600	130	910	910	650	565	85	4	40,5	Wheels
100100-3044	1000	1000	740	300	440	910	910	655	265	390	8	42,2	-----
100100-3044T	1000	1000	740	300	440	910	910	655	265	390	8	42,8	Wheels
100100-4034	1000	1000	740	400	340	910	910	655	365	290	8	42,3	-----
100100-4034T	1000	1000	740	400	340	910	910	655	365	290	8	42,9	Wheels
100100-7013	1000	1000	830	700	130	910	910	750	665	85	4	42,5	-----
100100-7013T	1000	1000	830	700	130	910	910	750	665	85	4	43,1	Wheels
100100-4044	1000	1000	840	400	440	910	910	755	365	390	8	44,9	-----
100100-4044T	1000	1000	840	400	440	910	910	755	365	390	8	45,5	Wheels
100100-3064	1000	1000	940	300	640	910	910	855	265	590	8	47,5	-----
100100-3064T	1000	1000	940	300	640	910	910	855	265	590	8	48,1	Wheels
100100-6034	1000	1000	940	600	340	910	910	855	565	290	8	47,3	-----



**100100-4013T**



**100100-7013T**



PRODUCT	EXTERNAL DIMENSIONS (mm)					INTERNAL DIMENSIONS (mm)					Handle No.	Weight-Appr. (kg)	Special Features
	Length	Width	Height	Base Height	Lid Height	Length	Width	Height	Base Height	Lid Height			
	100100-6034T	1000	1000	940	600	340	910	910	855	565	290	8	47,9
100100-3074	1000	1000	1040	300	740	910	910	955	265	690	8	50,0	-----
100100-3074T	1000	1000	1040	300	740	910	910	955	265	690	8	50,6	Wheels
100100-4064	1000	1000	1040	400	640	910	910	955	365	590	8	50,2	-----
100100-4064T	1000	1000	1040	400	640	910	910	955	365	590	8	50,8	Wheels
100100-6044	1000	1000	1040	600	440	910	910	955	565	390	8	49,9	-----
100100-6044T	1000	1000	1040	600	440	910	910	955	565	390	8	50,5	Wheels
100100-7034	1000	1000	1040	700	340	910	910	955	665	290	8	50,0	-----
100100-7034T	1000	1000	1040	700	340	910	910	955	665	290	8	50,6	Wheels
100100-4074	1000	1000	1140	400	740	910	910	1055	365	690	8	52,7	-----
100100-4074T	1000	1000	1140	400	740	910	910	1055	365	690	8	53,3	Wheels
100100-7044	1000	1000	1140	700	440	910	910	1055	665	390	8	52,6	-----
100100-7044T	1000	1000	1140	700	440	910	910	1055	665	390	8	53,2	Wheels
100100-6064	1000	1000	1240	600	640	910	910	1155	565	590	8	56,2	-----
100100-6064T	1000	1000	1240	600	640	910	910	1155	565	590	8	56,8	Wheels
100100-6074	1000	1000	1340	600	740	910	910	1255	565	690	8	57,7	-----
100100-6074T	1000	1000	1340	600	740	910	910	1255	565	690	8	58,3	Wheels
100100-7064	1000	1000	1340	700	640	910	910	1255	665	590	8	57,9	-----
100100-7064T	1000	1000	1340	700	640	910	910	1255	665	590	8	58,5	Wheels
100100-7074	1000	1000	1440	700	740	910	910	1355	665	690	8	60,4	-----
100100-7074T	1000	1000	1440	700	740	910	910	1355	665	690	8	61,0	Wheels
11040-3010	1100	400	405	300	105	1010	310	355	280	75	2	13,3	-----
11040-3010T	1100	400	405	300	105	1010	310	355	280	75	2	13,9	Wheels
11050-3010	1100	500	405	300	105	1010	410	355	280	75	2	14,9	-----
11050-3010T	1100	500	405	300	105	1010	410	355	280	75	2	15,5	Wheels
11070-2015T	1100	700	350	200	150	1010	610	300	180	120	4	20,2	Wheels
11070-2025T	1100	700	450	200	250	1010	610	400	180	220	8	24,0	Wheels
11070-3615T	1100	700	510	360	150	1010	610	460	340	120	4	23,9	Wheels



**11070-2025T**



**11070-3615T**

PRODUCT	EXTERNAL DIMENSIONS (mm)					INTERNAL DIMENSIONS (mm)					Handle No.	Weight-Appr. (kg)	Special Features
	Length	Width	Height	Base Height	Lid Height	Length	Width	Height	Base Height	Lid Height			
	11070-3625T	1100	700	610	360	250	1010	610	560	340	220	8	27,7
11070-5215T	1100	700	670	520	150	1010	610	620	500	120	4	27,9	Wheels
11070-5225T	1100	700	770	520	250	1010	610	720	500	220	8	31,7	Wheels
12040-3010	1200	400	405	300	105	1110	310	355	280	75	2	14,4	-----
12040-3010T	1200	400	405	300	105	1110	310	355	280	75	2	15,0	Wheels
12050-1410	1200	500	245	140	105	1110	410	195	120	75	2	13,8	-----
12050-1410T	1200	500	245	140	105	1110	410	195	120	75	2	14,4	Wheels
12050-3010	1200	500	405	300	105	1110	410	355	280	75	2	15,9	-----
12050-3010T	1200	500	405	300	105	1110	410	355	280	75	2	16,5	Wheels
12050-1432	1200	500	465	140	325	1110	410	415	120	295	4	18,0	-----
12050-1432T	1200	500	465	140	325	1110	410	415	120	295	4	18,6	Wheels
12050-3032	1200	500	625	300	325	1110	410	575	280	295	4	20,4	-----
12050-3032T	1200	500	625	300	325	1110	410	575	280	295	4	21,0	Wheels
12060-2012	1200	600	325	200	125	1110	510	255	180	75	4	18,8	-----
12060-2012T	1200	600	325	200	125	1110	510	255	180	75	4	19,4	Wheels
12060-3012F	1200	600	425	200	125	1110	510	255	180	75	4	20,5	Forklift Skids
12060-3012	1200	600	425	300	125	1110	510	355	280	75	4	19,1	-----
12060-3012T	1200	600	425	300	125	1110	510	355	280	75	4	19,7	Wheels
12060-2025	1200	600	450	200	250	1110	510	380	180	200	8	23,1	-----
12060-2025T	1200	600	450	200	250	1110	510	380	180	200	8	23,7	Wheels
12060-3712T6R-M4-M16	1200	600	490	370	120	1110	510				4	33,5	Wheels
12060-4012F	1200	600	525	300	125	1110	510	355	280	75	4	22,5	Forklift Skids
12060-4012	1200	600	525	400	125	1110	510	455	380	75	4	21,6	-----
12060-4012T	1200	600	525	400	125	1110	510	455	380	75	4	22,2	Wheels
12060-3025F	1200	600	550	200	250	1110	510	380	180	200	8	24,8	Forklift Skids
12060-3025	1200	600	550	300	250	1110	510	480	280	200	8	23,4	-----
12060-3025T	1200	600	550	300	250	1110	510	480	280	200	8	24,0	Wheels
12060-5012F	1200	600	625	400	125	1110	510	455	380	75	4	24,4	Forklift Skids



**11070-5215T**



**12060-3712T6R-M4-M16**



PRODUCT	EXTERNAL DIMENSIONS (mm)					INTERNAL DIMENSIONS (mm)					Handle No.	Weight Appr. (kg)	Special Features
	Length	Width	Height	Base Height	Lid Height	Length	Width	Height	Base Height	Lid Height			
12060-5012	1200	600	625	500	125	1110	510	555	480	75	4	23,1	----
12060-5012T	1200	600	625	500	125	1110	510	555	480	75	4	23,7	Wheels
12060-2045	1200	600	650	200	450	1110	510	580	180	400	8	27,0	----
12060-2045T	1200	600	650	200	450	1110	510	580	180	400	8	27,4	Wheels
12060-4025F	1200	600	650	300	250	1110	510	480	280	200	8	26,8	Forklift Skids
12060-4025	1200	600	650	400	250	1110	510	580	380	200	8	25,9	----
12060-4025T	1200	600	650	400	250	1110	510	580	380	200	8	26,5	Wheels
12060-6012F	1200	600	725	500	125	1110	510	555	480	75	4	26,4	Forklift Skids
12060-3045F	1200	600	750	200	450	1110	510	580	180	400	8	28,7	Forklift Skids
12060-3045	1200	600	750	300	450	1110	510	680	280	400	8	27,3	----
12060-3045T	1200	600	750	300	450	1110	510	680	280	400	8	27,9	Wheels
12060-5025F	1200	600	750	400	250	1110	510	580	380	200	8	28,7	Forklift Skids
12060-5025	1200	600	750	500	250	1110	510	680	480	200	8	27,4	----
12060-5025T	1200	600	750	500	250	1110	510	680	480	200	8	28,0	Wheels
12060-4045F	1200	600	850	300	450	1110	510	680	280	400	8	30,7	Forklift Skids
12060-4045	1200	600	850	400	450	1110	510	780	380	400	8	29,8	----
12060-4045T	1200	600	850	400	450	1110	510	780	380	400	8	30,4	Wheels
12060-6025F	1200	600	850	500	250	1110	510	680	480	200	8	30,7	Forklift Skids
12060-5045F	1200	600	950	400	450	1110	510	780	380	400	8	32,6	Forklift Skids
12060-5045	1200	600	950	500	450	1110	510	880	480	400	8	31,3	----
12060-5045T	1200	600	950	500	450	1110	510	880	480	400	8	31,9	Wheels
12060-6045F	1200	600	1050	500	450	1110	510	880	480	400	8	34,6	Forklift Skids
12070-2012	1200	700	325	200	125	1110	610	255	180	75	4	20,7	----
12070-2012T	1200	700	325	200	125	1110	610	255	180	75	4	21,3	Wheels
12070-3012	1200	700	425	300	125	1110	610	355	280	75	4	22,8	----
12070-3012T	1200	700	425	300	125	1110	610	355	280	75	4	23,4	Wheels
12070-2024	1200	700	440	200	240	1110	610	370	180	190	8	25,0	----
12070-2024T	1200	700	440	200	240	1110	610	370	180	190	8	25,6	Wheels



**12060-5012F**



**12070-2012T**



PRODUCT	EXTERNAL DIMENSIONS (mm)					INTERNAL DIMENSIONS (mm)					Handle No.	Weight Appr. (kg)	Special Features
	Length	Width	Height	Base Height	Lid Height	Length	Width	Height	Base Height	Lid Height			
12070-4012	1200	700	525	400	125	1110	610	455	380	75	4	24,9	-----
12070-4012T	1200	700	525	400	125	1110	610	455	380	75	4	25,5	Wheels
12070-2034	1200	700	540	200	340	1110	610	470	180	290	8	27,0	-----
12070-2034T	1200	700	540	200	340	1110	610	470	180	290	8	27,6	Wheels
12070-3024	1200	700	540	300	240	1110	610	470	280	190	8	27,1	-----
12070-3024T	1200	700	540	300	240	1110	610	470	280	190	8	27,7	Wheels
12070-2044	1200	700	640	200	440	1110	610	570	180	390	8	29,1	-----
12070-2044T	1200	700	640	200	440	1110	610	570	180	390	8	29,7	Wheels
12070-3034	1200	700	640	300	340	1110	610	570	280	290	8	29,1	-----
12070-3034T	1200	700	640	300	340	1110	610	570	280	290	8	29,7	Wheels
12070-4024	1200	700	640	400	240	1110	610	570	380	190	8	29,2	-----
12070-4024T	1200	700	640	400	240	1110	610	570	380	190	8	29,8	Wheels
12070-6012	1200	700	725	600	125	1110	610	655	580	75	4	32,4	-----
12070-6012T	1200	700	725	600	125	1110	610	655	580	75	4	33,0	Wheels
12070-3044	1200	700	740	300	440	1110	610	670	280	390	8	31,2	-----
12070-3044T	1200	700	740	300	440	1110	610	670	280	390	8	31,8	Wheels
12070-4034	1200	700	740	400	340	1110	610	670	380	290	8	31,2	-----
12070-4034T	1200	700	740	400	340	1110	610	670	380	290	8	31,8	Wheels
12070-2064	1200	700	840	200	640	1110	610	770	180	590	8	35,2	-----
12070-2064T	1200	700	840	200	640	1110	610	770	180	590	8	35,8	Wheels
12070-4044	1200	700	840	400	440	1110	610	770	380	390	8	33,3	-----
12070-4044T	1200	700	840	400	440	1110	610	770	380	390	8	33,9	Wheels
12070-6024	1200	700	840	600	240	1110	610	770	580	190	8	36,3	-----
12070-6024T	1200	700	840	600	240	1110	610	770	580	190	8	36,9	Wheels
12070-3064	1200	700	940	300	640	1110	610	870	280	590	8	37,3	-----
12070-3064T	1200	700	940	300	640	1110	610	870	280	590	8	37,9	Wheels
12070-6034	1200	700	940	600	340	1110	610	870	580	290	8	38,7	-----
12070-6034T	1200	700	940	600	340	1110	610	870	580	290	8	39,3	Wheels



**12070-2064T**



**12070-6012T**





PRODUCT	EXTERNAL DIMENSIONS (mm)					INTERNAL DIMENSIONS (mm)					Handle No.	Weight Appr. (kg)	Special Features
	Length	Width	Height	Base Height	Lid Height	Length	Width	Height	Base Height	Lid Height			
12070-4064	1200	700	1040	400	640	1110	610	970	380	590	8	39,4	----
12070-4064T	1200	700	1040	400	640	1110	610	970	380	590	8	39,7	Wheels
12070-6044	1200	700	1040	600	440	1110	610	970	580	390	8	40,8	----
12070-6044T	1200	700	1040	600	440	1110	610	970	580	390	8	41,4	Wheels
12070-6064	1200	700	1240	600	640	1110	610	1170	580	590	8	46,9	----
12070-6064T	1200	700	1240	600	640	1110	610	1170	580	590	8	47,5	Wheels
14040-3010	1400	400	405	300	105	1310	310	355	280	75	2	16,3	----
14040-3010T	1400	400	405	300	105	1310	310	355	280	75	2	16,9	Wheels
15060-3012	1500	600	425	300	125	1410	510	355	280	75	4	25,2	----
15060-3012T	1500	600	425	300	125	1410	510	355	280	75	4	25,8	Wheels
15060-4012	1500	600	525	400	125	1410	510	455	380	75	4	27,5	----
15060-4012T	1500	600	525	400	125	1410	510	455	380	75	4	28,1	Wheels
15060-3025	1500	600	550	300	250	1410	510	480	280	200	8	30,2	----
15060-3025T	1500	600	550	300	250	1410	510	480	280	200	8	30,8	Wheels
15060-5012	1500	600	625	500	125	1410	510	555	480	75	4	29,9	----
15060-5012T	1500	600	625	500	125	1410	510	555	480	75	4	30,5	Wheels
15060-4025	1500	600	650	400	250	1410	510	580	380	200	8	32,5	----
15060-4025T	1500	600	650	400	250	1410	510	580	380	200	8	33,1	Wheels
15060-3045	1500	600	750	300	450	1410	510	680	280	400	8	35,0	----
15060-3045T	1500	600	750	300	450	1410	510	680	280	400	8	35,6	Wheels
15060-5025	1500	600	750	500	250	1410	510	680	480	200	8	34,9	----
15060-5025T	1500	600	750	500	250	1410	510	680	480	200	8	35,5	Wheels
15060-4045	1500	600	850	400	450	1410	510	780	380	400	8	37,3	----
15060-4045T	1500	600	850	400	450	1410	510	780	380	400	8	37,9	Wheels
15060-5045	1500	600	950	500	450	1410	510	880	480	400	8	39,7	----
15060-5045T	1500	600	950	500	450	1410	510	880	480	400	8	40,3	Wheels
16060-4025F	1600	600	650	295	250	1510	510	475	275	200	8	35,4	Forklift Skids
160125-4134F	1600	1250	755	310	345	1510	1160	570	280	290	8	75,6	Forklift Skids



PRODUCT	EXTERNAL DIMENSIONS (mm)					INTERNAL DIMENSIONS (mm)					Handle No.	Weight Appr. (kg)	Special Features
	Length	Width	Height	Base Height	Lid Height	Length	Width	Height	Base Height	Lid Height			
160125-4144F	1600	1250	855	410	445	1510	1160	670	280	390	8	80,0	Forklift Skids
160125-5134F	1600	1250	855	410	345	1510	1160	670	380	290	8	80,7	Forklift Skids
160125-4154F	1600	1250	955	310	545	1510	1160	770	280	490	8	84,3	Forklift Skids
160125-5144F	1600	1250	955	410	445	1510	1160	770	380	390	8	85,1	Forklift Skids
160125-6134F	1600	1250	955	510	345	1510	1160	770	480	290	8	87,3	Forklift Skids
160125-5154F	1600	1250	1055	410	545	1510	1160	870	380	490	8	89,4	Forklift Skids
160125-6144F	1600	1250	1055	510	445	1510	1160	870	480	390	8	91,7	Forklift Skids
160125-6154F	1600	1250	1155	510	545	1510	1160	970	480	490	8	96,0	Forklift Skids
17040-3010	1700	400	405	300	105	1610	310	355	280	75	2	19,6	----
17040-3010T	1700	400	405	300	105	1610	310	355	280	75	2	20,2	Wheels
18070-2012	1800	700	325	200	125	1710	610	255	180	75	4	30,0	----
18070-2012T	1800	700	325	200	125	1710	610	255	180	75	4	30,6	Wheels
18070-3012	1800	700	425	300	125	1710	610	355	280	75	4	32,8	----
18070-3012T	1800	700	425	300	125	1710	610	355	280	75	4	33,4	Wheels
18070-2024	1800	700	440	200	240	1710	610	370	180	190	8	36,7	----
18070-2024T	1800	700	440	200	240	1710	610	370	180	190	8	37,3	Wheels
18070-4012	1800	700	525	400	125	1710	610	455	380	75	4	35,0	----
18070-4012T	1800	700	525	400	125	1710	610	455	380	75	4	35,6	Wheels
18070-2034	1800	700	540	200	340	1710	610	470	180	290	8	38,5	----
18070-2034T	1800	700	540	200	340	1710	610	470	180	290	8	39,1	Wheels
18070-3024	1800	700	540	300	240	1710	610	470	280	190	8	38,4	----
18070-3024T	1800	700	540	300	240	1710	610	470	280	190	8	39,0	Wheels
18070-2044	1800	700	640	200	440	1710	610	570	180	390	8	41,2	----
18070-2044T	1800	700	640	200	440	1710	610	570	180	390	8	41,8	Wheels
18070-4024	1800	700	640	400	240	1710	610	570	380	190	8	40,6	----
18070-4024T	1800	700	640	400	240	1710	610	570	380	190	8	41,2	Wheels
18070-3034	1800	700	640	300	340	1710	610	570	280	290	8	41,2	----
18070-3034T	1800	700	640	300	340	1710	610	570	280	290	8	41,8	Wheels





PRODUCT	EXTERNAL DIMENSIONS (mm)					INTERNAL DIMENSIONS (mm)					Handle No.	Weight Appr. (kg)	Special Features
	Length	Width	Height	Base Height	Lid Height	Length	Width	Height	Base Height	Lid Height			
18070-6012	1800	700	725	600	125	1710	610	655	580	75	4	46,2	-----
18070-6012T	1800	700	725	600	125	1710	610	655	580	75	4	46,8	Wheels
18070-3044	1800	700	740	300	440	1710	610	670	280	390	8	43,9	-----
18070-3044T	1800	700	740	300	440	1710	610	670	280	390	8	44,5	Wheels
18070-4034	1800	700	740	400	340	1710	610	670	380	290	8	43,4	-----
18070-4034T	1800	700	740	400	340	1710	610	670	380	290	8	44,0	Wheels
18070-2064	1800	700	840	200	640	1710	610	770	180	590	8	52,2	-----
18070-2064T	1800	700	840	200	640	1710	610	770	180	590	8	52,8	Wheels
18070-4044	1800	700	840	400	440	1710	610	770	380	390	8	46,0	-----
18070-4044T	1800	700	840	400	440	1710	610	770	380	390	8	46,6	Wheels
18070-6024	1800	700	840	600	240	1710	610	770	580	190	8	51,8	-----
18070-6024T	1800	700	840	600	240	1710	610	770	580	190	8	52,4	Wheels
18070-3064	1800	700	940	300	640	1710	610	870	280	590	8	54,9	-----
18070-3064T	1800	700	940	300	640	1710	610	870	280	590	8	55,5	Wheels
18070-6034	1800	700	940	600	340	1710	610	870	580	290	8	54,6	-----
18070-6034T	1800	700	940	600	340	1710	610	870	580	290	8	55,2	Wheels
18070-4064	1800	700	1040	400	640	1710	610	970	380	590	8	57,0	-----
18070-4064T	1800	700	1040	400	640	1710	610	970	380	590	8	57,6	Wheels
18070-6044	1800	700	1040	600	440	1710	610	970	580	390	8	57,3	-----
18070-6044T	1800	700	1040	600	440	1710	610	970	580	390	8	57,9	Wheels
18070-6064	1800	700	1240	600	640	1710	610	1170	580	590	8	68,3	-----
18070-6064T	1800	700	1240	600	640	1710	610	1170	580	590	8	68,9	Wheels
21060-3012	2100	600	425	300	125	2010	510	355	280	75	4	34,3	-----
21060-3012T	2100	600	425	300	125	2010	510	355	280	75	4	34,9	Wheels
21060-4012F	2100	600	525	295	125	2010	510	350	275	75	4	35,6	Forklift Skids
21060-4012	2100	600	525	400	125	2010	510	455	380	75	4	36,8	-----
21060-4012T	2100	600	525	400	125	2010	510	455	380	75	4	37,4	Wheels
21060-3025	2100	600	550	300	250	2010	510	470	280	190	8	40,7	-----



**18070-6034T**



**21060-4012F**

PRODUCT	EXTERNAL DIMENSIONS (mm)					INTERNAL DIMENSIONS (mm)					Handle No.	Weight: Appr. (kg)	Special Features
	Length	Width	Height	Base Height	Lid Height	Length	Width	Height	Base Height	Lid Height			
21060-3025T	2100	600	550	300	250	2010	510	470	280	190	8	41,3	Wheels
21060-5012F	2100	600	625	395	125	2010	510	450	375	75	4	38,4	Forklift Skids
21060-4025F	2100	600	625	295	230	2010	510	465	275	190	8	36,5	Forklift Skids
21060-4025	2100	600	650	400	250	2010	510	570	380	190	8	37,7	-----
21060-4025T	2100	600	650	400	250	2010	510	570	380	190	8	38,3	Wheels
21060-5025F	2100	600	750	395	255	2010	510	565	375	190	8	39,3	Forklift Skids
22090-3124F	2200	900	550	210	240	2110	810	360	170	190	8	73,1	Forklift Skids
22090-3152F	2200	900	825	210	515	2110	810	635	170	465	8	86,4	Forklift Skids
22090-5824F	2200	900	825	485	240	2110	810	635	445	190	8	86,5	Forklift Skids
22090-5852F	2200	900	1100	485	515	2110	810	910	445	465	8	99,8	Forklift Skids
28090-3124F	2800	900	550	210	240	2710	810	360	170	190	8	90,5	Forklift Skids
28090-3152F	2800	900	825	210	515	2710	810	635	170	465	8	106,6	Forklift Skids
28090-5824F	2800	900	825	485	240	2710	810	635	445	190	8	106,8	Forklift Skids
28090-5852F	2800	900	1100	485	515	2710	810	910	445	465	8	122,8	Forklift Skids



## CUSTOM SOLUTIONS



### SHOCK AND VIBRATION DAMPENING

Delicate equipment and instruments are transported and used under complete protection from shock, vibration, moisture and impact.

Cases are furnished with the appropriate grade foam and/or shock mounting equipment in line with special project requirements.

As part of our manufacturing process all foam interiors are CAD designed and tailor made, in house, using high speed CNC routing, laminating, drilling, blocking and hand sculpting.

Suprobox R series liner foams are carefully selected to match the weight and shock/vibration requirements of the payload. Also, specific anti-static and conductive foams are used for static sensitive equipment when necessary.

Suprobox R series cases offer a complete service including design, manufacturing, customization and interior design.

Our Sales Team and Design engineers work together to create the perfect solution starting with the selection of the right case and right dampening material.

## R SERIES OPTIONS

Suprobox R Series cases come with stainless steel black latches. Coupling catches and handles may be customized along with several other options such as color. Membrane valve and plastic handles are included to standard configuration.

Cases are manufactured in two main colors: black and olive drab; while gray, desert mustard, blue, orange and red are offered as optional.

Options are stainless steel handles, mechanical valve, hinged lid, humidity indicator, desicant port, stainless steel tie-down ring, document holder, forklift skids, riser & caster set, lockable catch, lockable wire catch, A6 and A7 size card holders, wheels.



Mechanical (PRV)  
Pressure Valve



Desicant port



Humidity Indicator



Hinged Lid



Stainles Steel Tie - Down  
Rings



Stainles Steel Handle



Forklift Skids & Risers



Plastic Handle (Standard)



Membrane Valve (Standard)



Lockable Catch



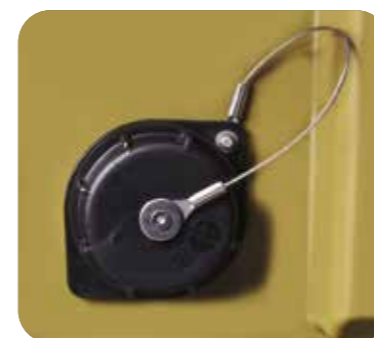
Lockable Wire Catch



Wheels



Riser & Caster



Document Holder



A6 Name Plate



A7 Name Plate

## COLOR OPTIONS



Black



Olive Drab



Gray



Blue



Desert Mustard



Orange



Red





## SUPROBOX RACK SERIES

### FEATURES

19" corrosion proof vertical square hole rack rails

Anti vibration mounts

M6 cage nuts

Easy grip

Built in edge casters (0812T range)

Multibrix stacking feature. Fits not only on all rack sizes but entire Suprobox range

Easy mount square punched inner frame

Lid hanger

Stainless steel catches

Heavy-duty polymer handles with soft rubber grip

Manufactured as a solid uniform structure which makes it extra resistant to impact & vibration. UV resistant made to withstand extreme temperatures & solar load.



**RACK03U48XR-0808**  
**RACK03U48XR-0812T**



CASE	U HEIGHT	EXTERIOR DIMENSIONS (mm)			INTERNAL CHASSIS DEPTH (mm)	WEIGHT (Kg)	HANDLE (Pcs)	WHEELS	PRESSURE VALVE
	U	Depth	Length	Width					
RACK03U48XR-0808	3U	285	776	570	480	15,7	4	No	Yes
RACK03U48XR-0812T	3U	285	806	570	480	16,9	6	Yes	Yes

**RACK05U48XR-0808**  
**RACK05U48XR-0812T**



CASE	U HEIGHT	EXTERIOR DIMENSIONS (mm)			INTERNAL CHASSIS DEPTH (mm)	WEIGHT (Kg)	HANDLE (Pcs)	WHEELS	PRESSURE VALVE
	U	Depth	Length	Width					
RACK05U48XR-0808	5U	374	776	570	480	18,8	4	No	Yes
RACK05U48XR-0812T	5U	374	806	570	480	20,0	6	Yes	Yes

**RACK03U61XR-0808**  
**RACK03U61XR-0812T**



CASE	U HEIGHT	EXTERIOR DIMENSIONS (mm)			INTERNAL CHASSIS DEPTH (mm)	WEIGHT (Kg)	HANDLE (Pcs)	WHEELS	PRESSURE VALVE
	U	Depth	Length	Width					
RACK03U61XR-0808	3U	285	900	570	610	17,9	4	No	Yes
RACK03U61XR-0812T	3U	285	930	570	610	19,1	6	Yes	Yes

**RACK05U61XR-0808**  
**RACK05U61XR-0812T**



CASE	U HEIGHT	EXTERIOR DIMENSIONS (mm)			INTERNAL CHASSIS DEPTH (mm)	WEIGHT (Kg)	HANDLE (Pcs)	WHEELS	PRESSURE VALVE
	U	Depth	Length	Width					
RACK05U61XR-0808	5U	374	900	570	610	20,4	4	No	Yes
RACK05U61XR-0812T	5U	374	930	570	610	21,7	6	Yes	Yes

**RACK07U48XR-0808**  
**RACK07U48XR-0812T**



CASE	U HEIGHT	EXTERIOR DIMENSIONS (mm)			INTERNAL CHASSIS DEPTH (mm)	WEIGHT (Kg)	HANDLE (Pcs)	WHEELS	PRESSURE VALVE
	U	Depth	Length	Width					
RACK07U48XR-0808	7U	463	776	570	480	20,7	4	No	Yes
RACK07U48XR-0812T	7U	463	806	570	480	22,0	6	Yes	Yes

**RACK09U48XR-0808**  
**RACK09U48XR-0812T**



CASE	U HEIGHT	EXTERIOR DIMENSIONS (mm)			INTERNAL CHASSIS DEPTH (mm)	WEIGHT (Kg)	HANDLE (Pcs)	WHEELS	PRESSURE VALVE
	U	Depth	Length	Width					
RACK09U48XR-0808	9U	552	776	570	480	22,7	4	No	Yes
RACK09U48XR-0812T	9U	552	806	570	480	24,0	6	Yes	Yes

**RACK07U61XR-0808**  
**RACK07U61XR-0812T**



CASE	U HEIGHT	EXTERIOR DIMENSIONS (mm)			INTERNAL CHASSIS DEPTH (mm)	WEIGHT (Kg)	HANDLE (Pcs)	WHEELS	PRESSURE VALVE
	U	Depth	Length	Width					
RACK07U61XR-0808	7U	463	900	570	610	22,5	4	No	Yes
RACK07U61XR-0812T	7U	463	930	570	610	23,8	6	Yes	Yes

**RACK09U61XR-0808**  
**RACK09U61XR-0812T**



CASE	U HEIGHT	EXTERIOR DIMENSIONS (mm)			INTERNAL CHASSIS DEPTH (mm)	WEIGHT (Kg)	HANDLE (Pcs)	WHEELS	PRESSURE VALVE
	U	Depth	Length	Width					
RACK09U61XR-0808	9U	552	900	570	610	24,6	4	No	Yes
RACK09U61XR-0812T	9U	552	930	570	610	25,9	6	Yes	Yes

**RACK11U48XR-0808**  
**RACK11U48XR-0812T**



CASE	U HEIGHT	EXTERIOR DIMENSIONS (mm)			INTERNAL CHASSIS DEPTH (mm)	WEIGHT (Kg)	HANDLE (Pcs)	WHEELS	PRESSURE VALVE
	U	Depth	Length	Width					
RACK11U48XR-0808	11U	641	776	570	480	25,7	4	No	Yes
RACK11U48XR-0812T	11U	641	806	570	480	27,1	6	Yes	Yes

**RACK14U48XR-0808**  
**RACK14U48XR-0812T**



CASE	U HEIGHT	EXTERIOR DIMENSIONS (mm)			INTERNAL CHASSIS DEPTH (mm)	WEIGHT (Kg)	HANDLE (Pcs)	WHEELS	PRESSURE VALVE
	U	Depth	Length	Width					
RACK14U48XR-0808	14U	775	776	570	480	30,2	4	No	Yes
RACK14U48XR-0812T	14U	775	806	570	480	31,5	6	Yes	Yes

**RACK11U61XR-0808**  
**RACK11U61XR-0812T**



CASE	U HEIGHT	EXTERIOR DIMENSIONS (mm)			INTERNAL CHASSIS DEPTH (mm)	WEIGHT (Kg)	HANDLE (Pcs)	WHEELS	PRESSURE VALVE
	U	Depth	Length	Width					
RACK11U61XR-0808	11U	641	900	570	610	27,3	4	No	Yes
RACK11U61XR-0812T	11U	641	930	570	610	28,7	6	Yes	Yes

**RACK14U61XR-0808**  
**RACK14U61XR-0812T**



CASE	U HEIGHT	EXTERIOR DIMENSIONS (mm)			INTERNAL CHASSIS DEPTH (mm)	WEIGHT (Kg)	HANDLE (Pcs)	WHEELS	PRESSURE VALVE
	U	Depth	Length	Width					
RACK14U61XR-0808	14U	775	900	570	610	32,1	4	No	Yes
RACK14U61XR-0812T	14U	775	930	570	610	33,4	6	Yes	Yes

## SUPROBOX RACKS



Shock and vibration protection for your electronics. Polymer case with aluminium rack frame suspended by anti-vibration mounts.

Available from 3U to 14U.

Tested to MIL-STD 810 G, Def Stan 81-41, STANAG 4280 and rated IP65.

All racks carry the Multibrix stacking feature.

Ideal for electronics, memory storage equipment, servers, lab and testing equipment, medical equipment, aerospace equipment, cameras and broadcasting equipment, meteorological equipment, flight simulators and mobile military equipment

- Ruggedized roto-molded case body made from impact resistant PE material
- 480 mm – 610 mm rack depth
- 80 mm or 120 mm lid with edge casters
- Standard 19" Rack width designed to meet ANSI/EIA-310-C
- Square hole rack rails to accommodate 6 mm standard cage nuts
- Heavy-duty polymer handles with soft rubber grip
- Shock mounts for maximum protection during transit
- Stainless Steel Catches
- Watertight gasket
- Mechanical Pressure Relief Valve (Standard)
- Lid hangers (standard)
- Standard payload range 20-75 kg
- Size range 3U to 14U
- Light Weight compact design
- Gridlines featured on the lid are specially designed for pallet strapping.
- Reduced Footprint
- Multibrix® stacking and storage system (secure stacking and cross stacking of same or different size cases).
- Tested and Approved – MIL-STD 810 G, STANAG 4280, Def Stan 81-41
- IP 65 rated for dust and water ingress

## SUPROBOX Rack - 480 mm Chassis

Part Code	U Height	External Dimension (mm)			Chassis Depth	Weight	Handles	Wheels	Pressure Valve
	U	Height	Length	Width	mm	Kg	Pcs		
RACK03U48XR-0808	3U	285	776	570	480	15,7	4	No	Yes
RACK03U48XR-0812T	3U	285	806	570	480	16,9	6	Yes	Yes
RACK05U48XR-0808	5U	374	776	570	480	18,8	4	No	Yes
RACK05U48XR-0812T	5U	374	806	570	480	20,0	6	Yes	Yes
RACK07U48XR-0808	7U	463	776	570	480	20,7	4	No	Yes
RACK07U48XR-0812T	7U	463	806	570	480	22,0	6	Yes	Yes
RACK09U48XR-0808	9U	552	776	570	480	22,7	4	No	Yes
RACK09U48XR-0812T	9U	552	806	570	480	24,0	6	Yes	Yes
RACK11U48XR-0808	11U	641	776	570	480	25,7	4	No	Yes
RACK11U48XR-0812T	11U	641	806	570	480	27,1	6	Yes	Yes
RACK14U48XR-0808	14U	775	776	570	480	30,2	4	No	Yes
RACK14U48XR-0812T	14U	775	806	570	480	31,5	6	Yes	Yes

## SUPROBOX Rack - 610 mm Chassis

Part Code	U Height	External Dimension (mm)			Chassis Depth	Weight	Handles	Wheels	Pressure Valve
	U	Height	Length	Width	mm	Kg	Pcs		
RACK03U61XR-0808	3U	285	900	570	610	17,9	4	No	Yes
RACK03U61XR-0812T	3U	285	930	570	610	19,1	6	Yes	Yes
RACK05U61XR-0808	5U	374	900	570	610	20,4	4	No	Yes
RACK05U61XR-0812T	5U	374	930	570	610	21,7	6	Yes	Yes
RACK07U61XR-0808	7U	463	900	570	610	22,5	4	No	Yes
RACK07U61XR-0812T	7U	463	930	570	610	23,8	6	Yes	Yes
RACK09U61XR-0808	9U	552	900	570	610	24,6	4	No	Yes
RACK09U61XR-0812T	9U	552	930	570	610	25,9	6	Yes	Yes
RACK11U61XR-0808	11U	641	900	570	610	27,3	4	No	Yes
RACK11U61XR-0812T	11U	641	930	570	610	28,7	6	Yes	Yes
RACK14U61XR-0808	14U	775	900	570	610	32,1	4	No	Yes
RACK14U61XR-0812T	14U	775	930	570	610	33,4	6	Yes	Yes

## RACK OPTIONS

Suprobox Rack Series cases come with stainless steel black latches. Coupling catches and handles may be customized along with several other options such as color. Mechanical pressure relief valve and plastic handles are included to standard configuration.

Cases are manufactured in two main colors: black and olive drab; while gray, desert mustard, blue, orange and red are offered as optional.

Options are membrane valve, stainless steel handles, humidity indicator, stainless steel tie-down ring, riser & caster set, lockable catch, lockable wire catch, A6 and A7 size card holders, wheels, document pouch and coupling strap.



Mechanical Pressure Relief Valve (Standard)



Humidity Indicator



Stainless Steel Tie - Down Rings



Stainless Steel Handle



Plastic Handle (Standard)



Membrane Valve



Coupling Strap



Lockable Catch



Lockable Wire Catch



Wheels (Standard on 12T Models)



Document Pouch



A6 Name Plate



A7 Name Plate



Riser & Caster

## COLOR OPTIONS



Black



Olive Drab



Gray



Blue



Desert Mustard



Orange



Red



## Multibrix Stacking System

**Multibrix®** is a patented unique stacking and storage system allowing secure stacking and cross stacking of same or different size cases.

Two different size Suprobox cases featuring the **Multibrix®** stacking and storage system can easily interlock so they can be stacked securely.

The same system allows the cases to be stacked at a 90° angle and transported as thus, as an extra space saving option.

The **Multibrix®** stacking feature is designed to enhance the structural rigidity of the cases.

Gridlines featured on the lid are specially designed for pallet strapping.

The Suprobox range comes in multiples of 10 cm sizes which makes them perfect for standard palletizing and metric packaging options.





## Suprobox R Series and Rack Series Are Tested and Approved



Corner Drop



Face Drop



Transverse Shock



Vertical Shock Rack

### MIL-STD-810 G



#### VIBRATION

MIL STD 810G Method 514.6 Procedure I Category 4

#### FUNCTIONAL SHOCK

MIL STD 810G Method 516.6 Procedure I

#### TRANSIT DROP

using MIL STD 810G Method 516.6 Procedure IV

#### LOW TEMPERATURE

MIL STD 810G Method 502.5 Procedure

#### HIGH TEMPERATURE

MIL STD 810G Method 501.5 Procedure I

#### HUMIDITY

MIL STD 810G Method 507.5 Procedure II

#### BLOWING SAND

MIL STD 810G Method 510.5 Procedure II

#### BLOWING RAIN

MIL STD 810G Method 506.5

#### IP RATING

IP 65 / IP 67 EN 60529



### STANAG 4280 DEF-STAN 81-41 PART 3 ISSUE 5



#### LOW TEMPERATURE TEST (NATO LEVEL 1)

#### DRY HEAT TEST (NATO LEVEL 1)

#### VIBRATION TEST: SINUSOIDAL (NATO LEVEL 1)

#### VERTICAL IMPACT TEST (NATO LEVEL J)

#### HORIZONTAL IMPACT TEST (NATO LEVEL J)

IS A PART OF VERTICAL IMPACT TEST





suprobox.com

**ISTANBUL:**

Deri Osb Mah. Lazer Sk. No: 3 TUZLA/ISTANBUL 34956

Tel : +90 (216) 365 0 365 (28)

Fax : +90 (216) 365 0 366

E-Mail : info@suprobox.com

**KOSTRZYŃ:**

Suprobox Sp. z o.o.

OKRĘŻNA 18,

62-025 KOSTRZYŃ

POLAND